

Helps to fight contamination and speeds flow

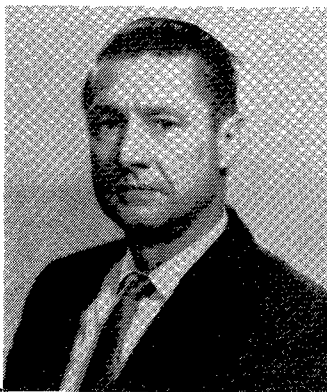


Mr. Nestor B. Knoepfler
General Chairperson

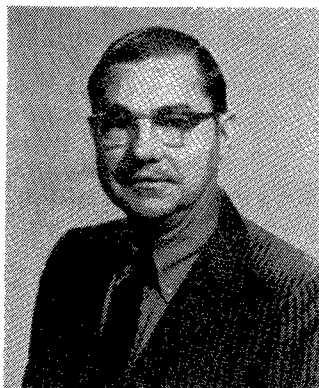


Mr. Homer K. Gardner, Jr.
Assistant General Chairperson

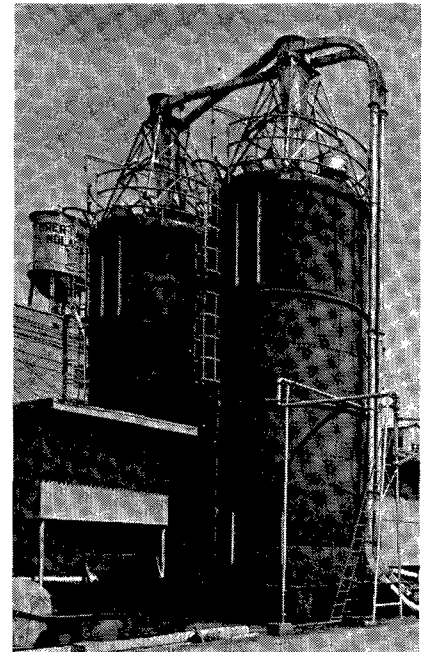
Committee members plan New Orleans Spring Meeting April 21-24, 1976



Dr. R.L. Ory
Chairperson, Program Committee



Dr. H.P. Dupuy
Assistant Chairperson, Program Committee



These Permaglas[®] structures have built-in sanitary features. Their glass-bonded-to-steel walls fight the many contamination problems faced in handling and storing raw materials and processed products.

There's another big advantage at unloading time. These flat bottom storage units have a chain-type 360° sweep arm unloader at the base. It undercuts the entire column of material and, coupled with the slick glass surface, gives a positive downward movement and discharge. There are no conical surfaces for material hang-ups, bridging or compacting.

These storage structures offer you many profitable benefits . . . choice of 42 sizes with capacity from 1,425 to 36,000-cu ft . . . easily erected, they fit tight spots (*even inside buildings*) . . . impervious to chemical attacks . . . attractive, odor tight, sealed against leakage for sure pollution control . . . permit more economical bulk handling systems . . . never need painting.

We supply complete bulk handling and storage systems: pneumatic or mechanical conveyors, mixers, hammer mills, weigh scales, bins and complete control systems. *Write or call today for full details . . . Sprout, Waldron & Co., Inc., Muncy, PA 17756 (Phone 717/546-8211) — or Sprout, Waldron of Canada Ltd., Box 515, Waterloo, Ont. N2J4A9 (Phone 519/579-4210).*

C-759

(Continued on page 606A)

 **Sprout-Waldron**
Size Reduction • Size Classification • Mixing
Pelletizing • Bulk Materials Handling